

## R-CAM 1000 XLT

### Portable, Dual View Camera for Water Wells and Boreholes.

The R-Cam 1000 XLT is a portable dual view borehole camera system with selectable control for either downhole or side view videos. Side view lens includes 360 degree rotation to the right and left with no external moving parts.

This camera has effective survey capabilities for 76.2 mm to 305 mm well diameters. The R-Cam 1000 XLT well camera system comes equipped with a protective case provided for storage, lighting system, camera, control unit, cable, video monitor, centring bands, DVR, power supply and transport cart for easy manoeuvring.



**Camera Diameter:** 51 mm O.D.

**Overall Camera Length:** 508 mm

**Housing:** Stainless steel

**Lens:** BK-7 glass

**Cable:** 1,000 feet (304.8 m) Kevlar reinforced, small diameter, single conductor coaxial cable.

**Power Supply:** Portable 12VDC battery pack and charger. Rechargeable by local current (please specify at time of order).

**Total Camera Weight:** 8.2 kg

**Pressure Rating:** Pressure tested and waterproof to 3.4MPa

**Scanning System:** 540 TVL

**Operating Temperature:** 0° to 50° C

**Recorder:** Flash based hard drive with 16GB of internal storage and 16GB of external USB storage

**LED Lighting:** High intensity, shock proof LED lighting with five adjustable stages of brightness

**Depth Counter:** On screen depth display with Calibration measured in feet and tenths, or meters.

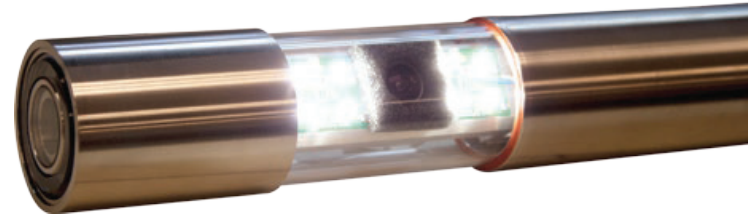
**Monitor:** 9 inch LCD colour monitor

**Winch, Reel, Motor and Cart:** 12VDC electric powered, variable speed reel for raising and lowering camera in well. All parts are mounted on a small, two wheeled cart with extendable 914.4mm boom.

## R-CAM 1300 XLT

### Portable, Dual View Camera for Water Wells and Boreholes.

The R-CAM 1300 XLT is a portable dual view borehole camera system with selectable control for either downhole or side view videos. Side view lens includes 360 degree rotation to the right and left with no external moving parts. This camera has effective survey capabilities for 76.2 mm to 305 mm well diameters. The R-Cam 1300 well camera system comes equipped with a protective case provided for storage, lighting system, camera, control unit, cable, video monitor, centring bands, DVR, power supply and transport cart for easy manoeuvring.



**Camera Diameter:** 51 mm O.D.

**Overall Camera Length:** 508 mm

**Housing:** Stainless steel

**Lens:** BK-7 glass

**Cable:** 1,300 feet (396.24 m) Kevlar reinforced, small diameter, single conductor coaxial cable.

**Power Supply:** Portable 12VDC battery pack and charger. Rechargeable by local current (please specify at time of order).

**Total Camera Weight:** 8.2 kg

**Pressure Rating:** Pressure tested and waterproof to 3.4MPa

**Scanning System:** 540 TVL

**Operating Temperature:** 0° to 50° C

**Recorder:** Flash based hard drive with 16GB of internal storage and 16GB of external USB storage

**LED Lighting:** High intensity, shock proof LED lighting with five adjustable stages of brightness

**Depth Counter:** On screen depth display with Calibration measured in feet and tenths, or metres.

**Monitor:** 9 inch LCD colour monitor

**Winch, Reel, Motor and Cart:** 12VDC electric powered, variable speed reel for raising and lowering camera in well. All parts are mounted on a small, two wheeled cart with extendable 914.4mm boom.

## CONTROL UNIT / DVR

The R-CAM XLT control unit comes equipped with a state-of-the-art solid state DVR that records survey footage to either 16GB of internal storage, or to an expandable USB flash drive. Survey footage is exported natively in either a .ts or .mp4 format, meaning the footage will play on all major PC operating systems without the need for file conversion.

All DVR recording and playback functions can be controlled by the included Bluetooth keyboard, including adding text details of your well survey to your recording or taking a screen shot of a troublesome area.

The R-CAM XLT also features a built in microphone recorder. Now, adding voiceover commentary to your recordings is as simple as pushing a button.

Existing R-CAM customers can upgrade their existing control units to take advantage of these exciting new features.

1. 9 inch LCD colour monitor
2. Internal solid state DVR with 16GB of storage. Expandable USB flash drive for greater recording capacity.
3. LEDs with five stages of adjustable brightness ensures the ideal level of lighting.
4. Built in microphone allows voiceover commentary to be added to any recording.
5. Bluetooth keyboard for operating all recording functions, adding text overlays and capturing screen shots.

