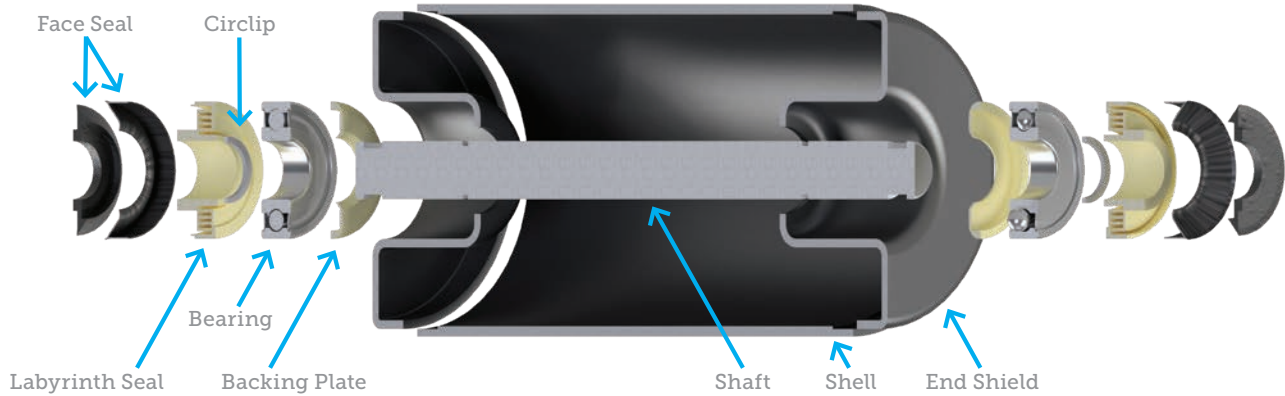


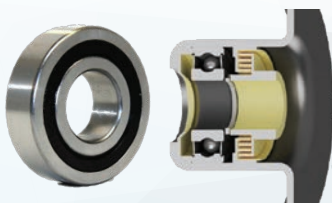


## HMA BELT FRIENDLY CONVEYOR ROLLERS



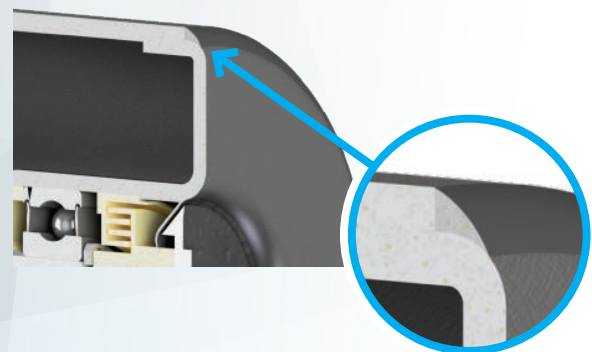
### FEATURES AND BENEFITS

- Our wave shaped end shield provides greater strength.
- The shell is machined and the end shield is pressed in providing better alignment and concentricity to the shaft reducing loading on bearings and improving overall efficiency.
- We use a heavy duty 3.5mm thick shell instead of the 2.5mm shell of most competitor product giving increased strength & life



- Our rollers are fitted with high quality Sealed Bearings where as most competitors product use steel shielded bearings. This along with our face seal and labyrinth seal provide a superior triple layer sealing solution.

- Our end shield is welded to the shell on the outer corner to provide a rounded surface with no sharp edges that can damage or cause wear to conveyor belts.
- Locating the end shield this way also leaves no void where material can build up reducing the possibility of jamming and resulting damage.



Competitor's Roller



HMA Roller



Email: [flowandindustrial@hmagrp.com](mailto:flowandindustrial@hmagrp.com)

Tel: +61 (0)3 8720 6770

Fax: +61 (0)3 8720 6779

FLO-DS-0008. OCTOBER 2017