

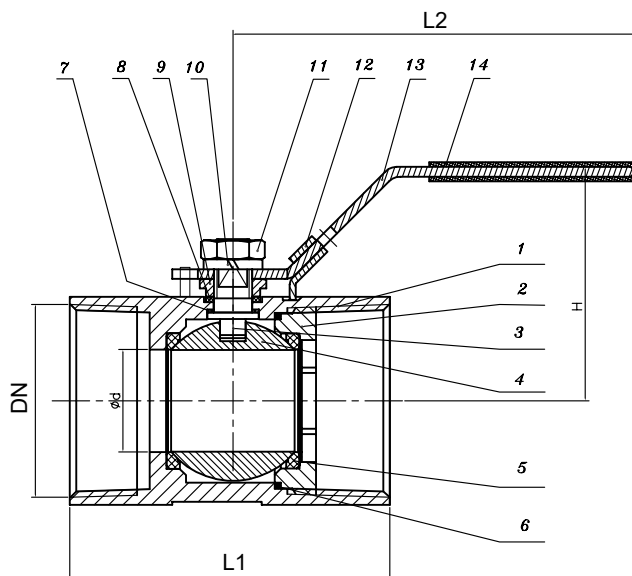
# V1 Reduced Port Ball Valves

## V-1 TYPE STAINLESS STEEL

- Size Range: 8mm – 50mm (1/4" – 2")
- Pressure Rating: 1000 PSI (69 bar) W.O.G
- Pressure test: API 598

### FEATURES:

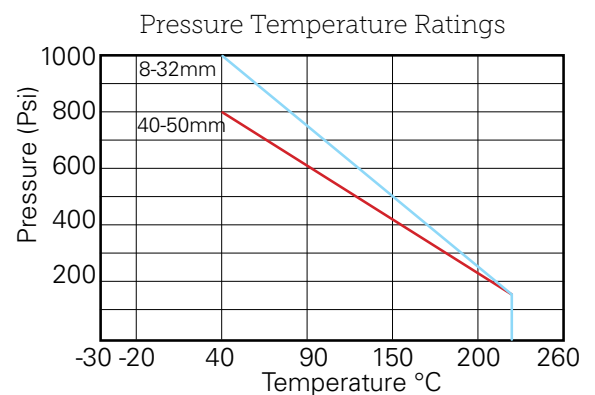
- SS316 Body and ball (ASTM- A351-CF8M)
- Available in BSP and NPT threaded ends
- Blow-out proof stem
- Investment casting body
- Plastic coated lever handle with locking device



No.	Part Name	Material
1	Body	CF8M
2	Cap	CF8M
3	Stem	SS 316
4	Ball	CF8M
5	Ball Seat	RPTFE
6	Joint Gasket	PTFE
7	Thrust Washer	PTFE
8	Stem Packing	PTFE
9	Gland Nut	SS 304
10	Spring Washer	SS 304
11	Nut	SS 304
12	Lock Device	SS 304
13	Oval Handle	SS 304
14	Plastic Cover	PLASTIC

### DIMENSIONS

DN	ød	L1	L2	H	CV Factor	Torque (Nm)	Weight (Kg)
8	5	39	67	30	3.8	1.4	0.07
10	7	44	67	32	4	1.4	0.10
15	9.2	57	93	40	4.5	1.4	0.17
20	12.6	59	93	44	9	2	0.26
25	16	71	101	54	16	4	0.41
32	20	78	101	59	24	6.1	0.67
40	25	83	125	68	37	8.1	0.85
50	32	100	125	74	68	9.5	1.33



Note The designs, materials, dimensions and specifications shown are subject to change without notice due to our continuing program of product development. Please request a certified drawing if dimensions are critical.