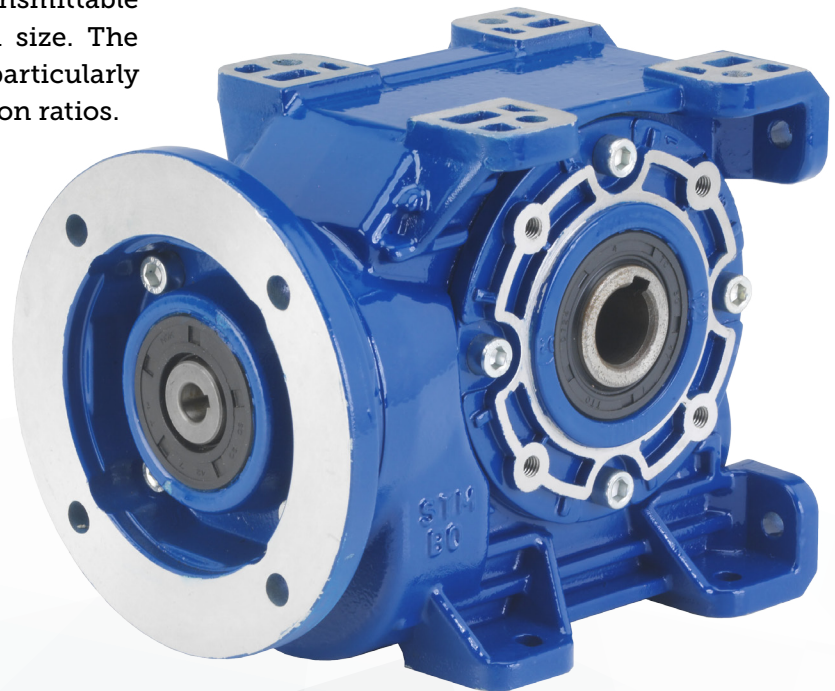
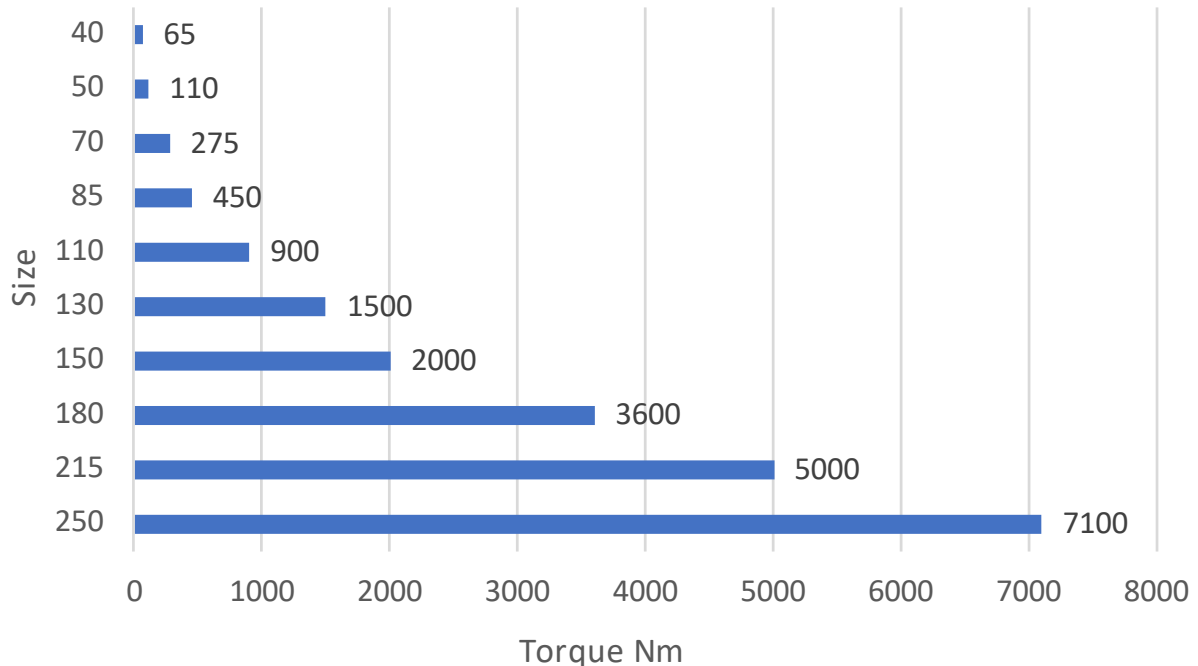


## CB HELICAL WORM GEARBOX

The design of this range of gearbox is to use one single body to include all gear ratios. This solution allows for efficient heat dissipation as well as a high housing rigidity and application simplicity. Efficiency is positively improved but also longevity and the highest transmittable torque possible is achieved for each size. The compromise of cost/performance is particularly centred in the middle range of reduction ratios.

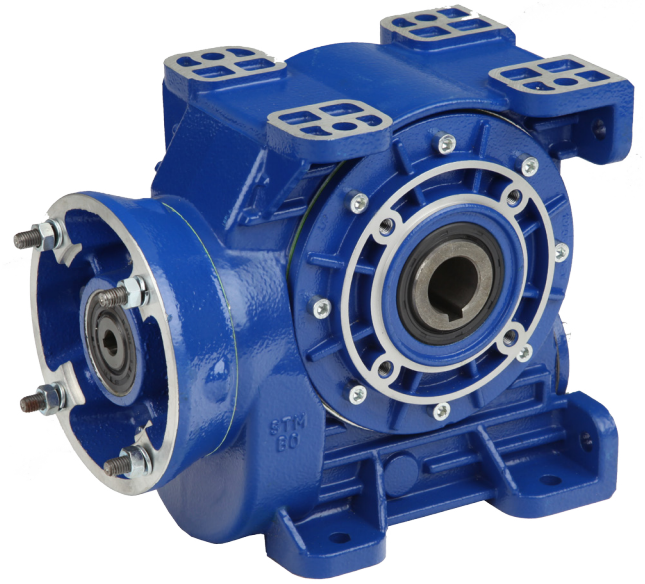
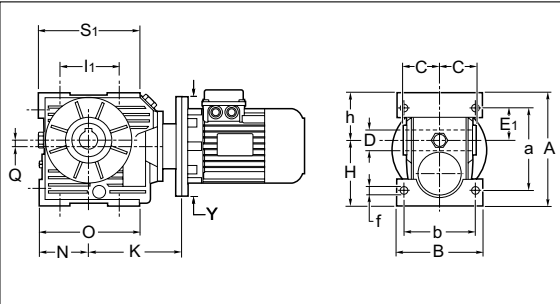


### Maximum Output Torque

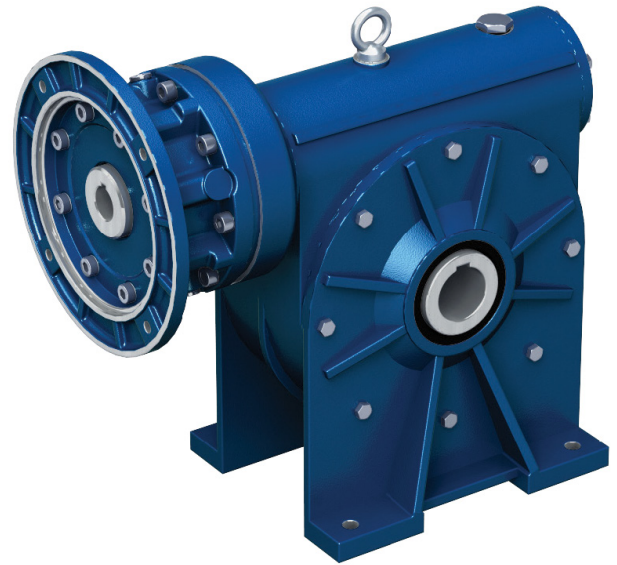
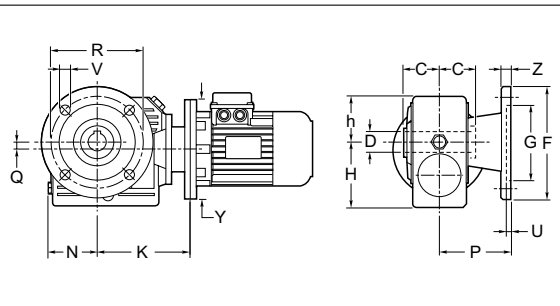


# Helical Worm Gearbox - CB

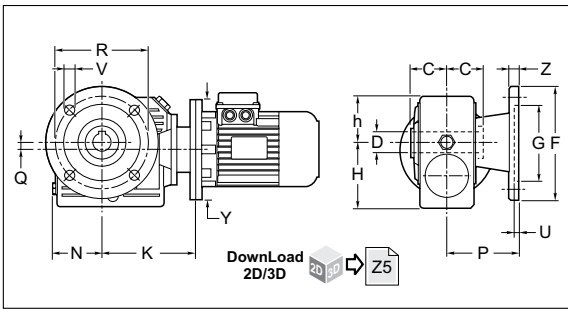
## CB



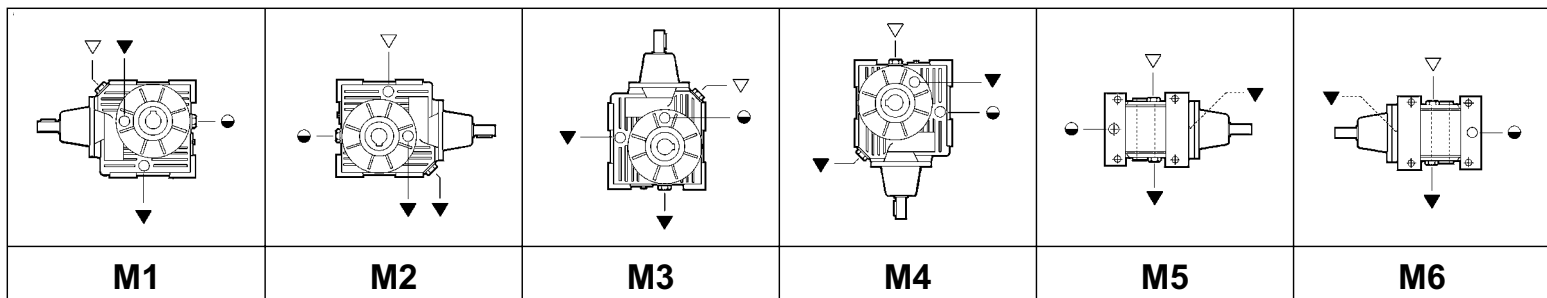
## CB/F



## CBF (F1,F2,F3,F4)



## MOUNTING POSITIONS



# Helical Worm Gearbox - CB



CR CB	A	a	B	b	C	D H7	d J6	E1	f	H	h	l1	L	M	m	N	O	Q	S1
40	135	100	102	84	41	19 (18)	14	40	7	78	57	70	30	137	M6	59	117	7	117
50	166	120	120	99	49	24 (25)	19	46	9	97	69	85	40	143	M8	69	130	9	130
70	215	160	140	116	60	28	24	61	11	124	88	120	50	188	M8	93	193	17.5	186
85	252	188	170	140	61	32 (35)	28	74	13	145	107	140	60	212	M8	116	231	29	221
110	330	244	200	162	77.5	42	32	97	14	190	140	200	70	264.5	M10	142	282	43	277

CR CB	F	G H8	P	R	U	V	Z	Fp	Gp e8	Pp	Rp	Up	Vp
40	140°	95	82	115	5	8.5	9	95	60	38	83	2	M6
50	160°	110	91.5	130	5	10	10	105	70	49	85	2.5	M8
70	200°	130	111	165	5	13	11	120	80	57	100	5	M8
85	200	130	100	165 <sup>0</sup> <sub>+11</sub>	5	13	12	144	110	56.5	130	3.5	M10
110	250	180	150	215	5	15	16	200	130	74	165	3	M12

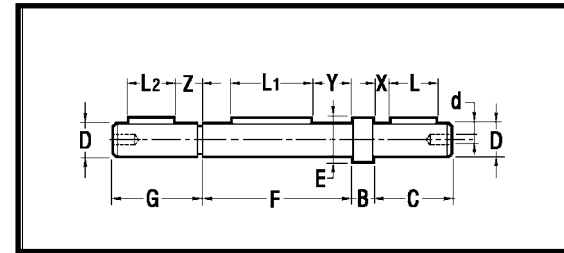
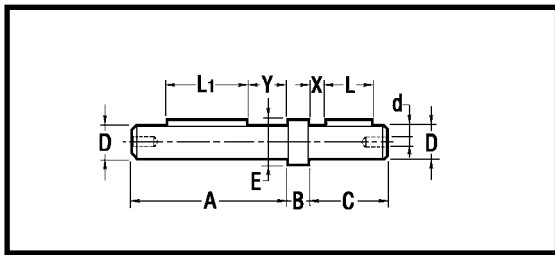
	CB									
	40		50		70		85		110	
	Y	K	Y	K	Y	K	Y	K	Y	K
B5	120	108	120	133	140	153	140	172.5	200	229
	140	108	140	133	160	153	160	172.5	250	239
	—	—	160	133	200	165	200	193	—	—
B14	80	108	80	133	—	—	—	—	—	—
	90	112	90	133	—	—	—	—	—	—

	CR - CB														
	40		50				70			85			110		
	F1	F2	F1	F2	F3	F4	F1°	F2°	F3	F1	F2	F3	F1	F2	F3
F	106	120	125	125	140	125	175	175	160	200	210	160	200	270	270
G (H8)	60	80	70	70	95	70	115	115	110	130	152	110	130	170	170
P	69	62	93	73	75	85	116	85	101	141	120	91	115	132	178
R	87	100	90 <sup>0</sup> <sub>+9</sub>	100	115	90 <sup>0</sup> <sub>+4.5</sub>	150	150	130	165	176	130	165	230	230
U	5	5	5	4	4	5	5	5	6	6	5	5	5	10	10
V	8.5	9	10.5	9	9	10.5	11	11	11	13	13	11.5	13	13.5	13.5
Z	9	9	10	9	9	11	10	10	11	12	14	10	12	18	18

# Helical Worm Gearbox - CB



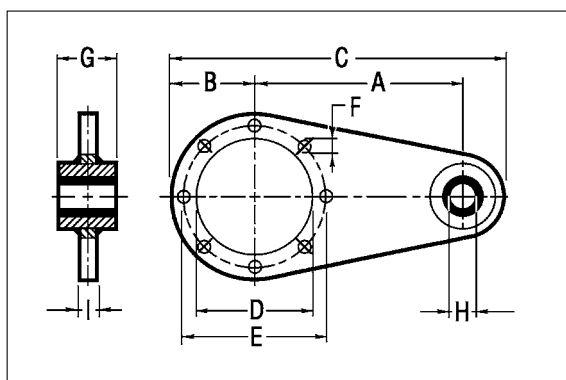
## OUTPUT SHAFTS



RI - RMI	28	40	50	63	70	85	110	130	150	180
CRI - CRMI	28/28	28/40 40/40	28/50 40/50	28/63 40/63	28/70 40/70 50/70 63/70	40/85 50/85 63/85 70/85	50/110 63/110 70/110 85/110	63/130 70/130 85/130	85/150 110/150	85/180 110/180 130/180
CR - CB	—	40	50	—	70	85	110	—	—	—
A	58	80	95	109	117	119	153	177	207	239
B	1.5	10	10	10	10	10	10	20	20	20
C	29.5	40	45	60	60	71	100	110	110	130
D <sub>g6</sub>	14	19	24	25	28	32	42	48	55	65
d	M6	M8	M8	M8	M8	M10	M10	M10	M12	M14
E	17	22	28	34	34	38	50	58	63	78
F	60	82	98	120	120	122	155	180	210	240
G	31	50	55	70	70	81	110	130	130	150
L	20	25	30	40	40	50	80	90	90	100
L1	20	40	50	60	60	70	80	90	100	120
L2	20	25	30	40	40	50	80	90	90	100
X	4.5	8	7.5	10	10	10	10	10	10	15
Y	20	21	24	30	30	26	37	45	55	60
Z	6	18	18	20	20	20	20	30	30	35

## TORQUE ARM

RI - RMI	28	40	50	63	70	85	110	130	150	180
CRI - CRMI	28/28	28/40 40/40	28/50 40/50	28/63 40/63	28/70 40/70 50/70 63/70	40/85 50/85 63/85 70/85	50/110 63/110 70/110 85/110	63/130 70/130 85/130	85/150 110/150	85/180 110/180 130/180
CR - CB	—	40	50	—	70	85	110	—	—	—
A	70	90	100	150	150	200	250	300	350	400
B	34.5	50	60	53	60	75	100	120	125	150
C	119.5	165	185	230	240	313	388	465	525	610
D	42.15	60	70	70	80	110	130	180	180	230
E	56	83	85	85	100	130	165	215	215	265
F	6.5	7	9	9	9	11	13	13	15	17
G	—	15	15	20	20	25	25	30	30	35
H	9	10	10	10	10	20	20	25	25	35
I	4	4	4	6	6	6	6	6	6	10



Email: [flowandindustrial@hmagrp.com](mailto:flowandindustrial@hmagrp.com)

Tel: +61 (0)3 8720 6770

Fax: +61 (0)3 8720 6779

FLO-DS-0010. NOV 2017